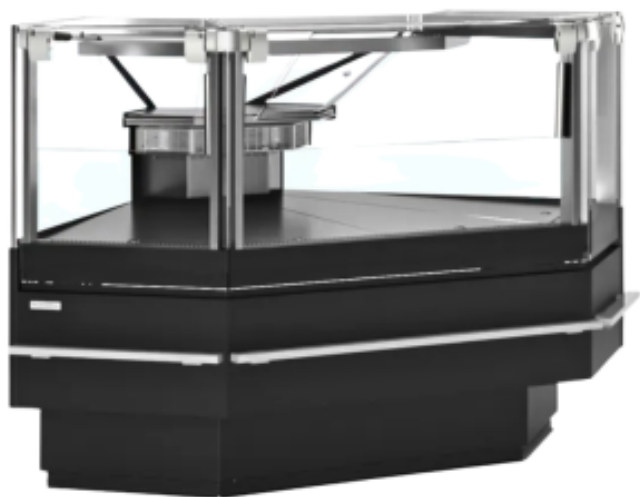


# 90° Angle Module Refrigerated Counter - 155 L TDSOCA90EXTB



TEFCOLD 

## Product Features:

|                              |                                 |  |
|------------------------------|---------------------------------|--|
| Food : 220-240-v             | Volume (L) : 155                | Minimum Temperature (°C) : 0                     |
| Maximum Temperature (°C) : 4 | Exterior Finish : black         | Depth (mm) : 1120                                |
| Height (mm) : 1190           | Weight (kg) : 290               | Power (W) : 530                                  |
| Subject : stainless-steel    | Interior Lighting : yes         | Color : black                                    |
| Type of Cold : ventilated    | Thermostat : yes                | Maximum operating ambient temperature (°C) : 25c |
| Climate class : 3            | Refrigerant gas included : r290 |  |

## Informations Logistiques :

|                   |                      |                   |
|-------------------|----------------------|-------------------|
| Largeur : 1500 mm | Profondeur : 1450 mm | Hauteur : 1400 mm |
|-------------------|----------------------|-------------------|